

Progressive Concepts LB Model Vertical FM Antenna

ASSEMBLY & MOUNTING INSTRUCTIONS



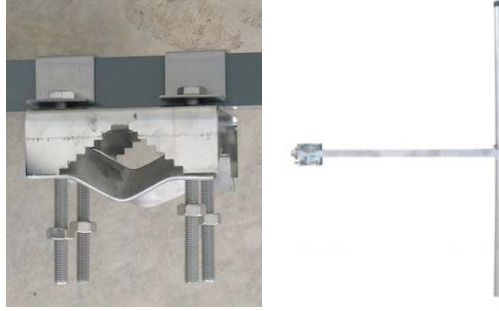
- ***The antenna must be assembled with the central insulator facing down.***
- ***Screw in the upper element, then tighten the screw on the Heavy-Duty Clamp with a 10mm wrench.***



- ***The element with the hole (drain) in plastic cap must be mounted facing down.***
- ***Firmly screw in and tighten the lower element.***



- ***Install the brackets over the boom arm in order to have vertical polarization.***



■ **Protect the RF connector with rubber tape (cambric) if desired.**

■ **The LB Model Vertical Dipole Antenna is Broadband, so it requires no tuning.**

If you are mounting an array of 2 or more dipoles it will be necessary to calculate the spacing between the elements; The formula to do this by function of the frequency is:

" 300 divided by Frequency (MHz) x 0.8 = Distance in meters "

Example:

Freq: 98.5 MHz: $300 / 98.5 = 3.045$ meters X 0.8 = 2.43 meters

Bill of Materials:

1 Instruction Manual

1 Antenna composed of:

1 Central antenna square boom 35 X 35 mm

1 Upper element 33 mm x 660 mm with a stainless steel Heavy-Duty Clamp

1 Lower element 33 mm x 650 mm

1 Main Support bracket 110 x 85 mm

2 Omega brackets

2 Brackets 100 X 40mm

8 Bolts metric 10

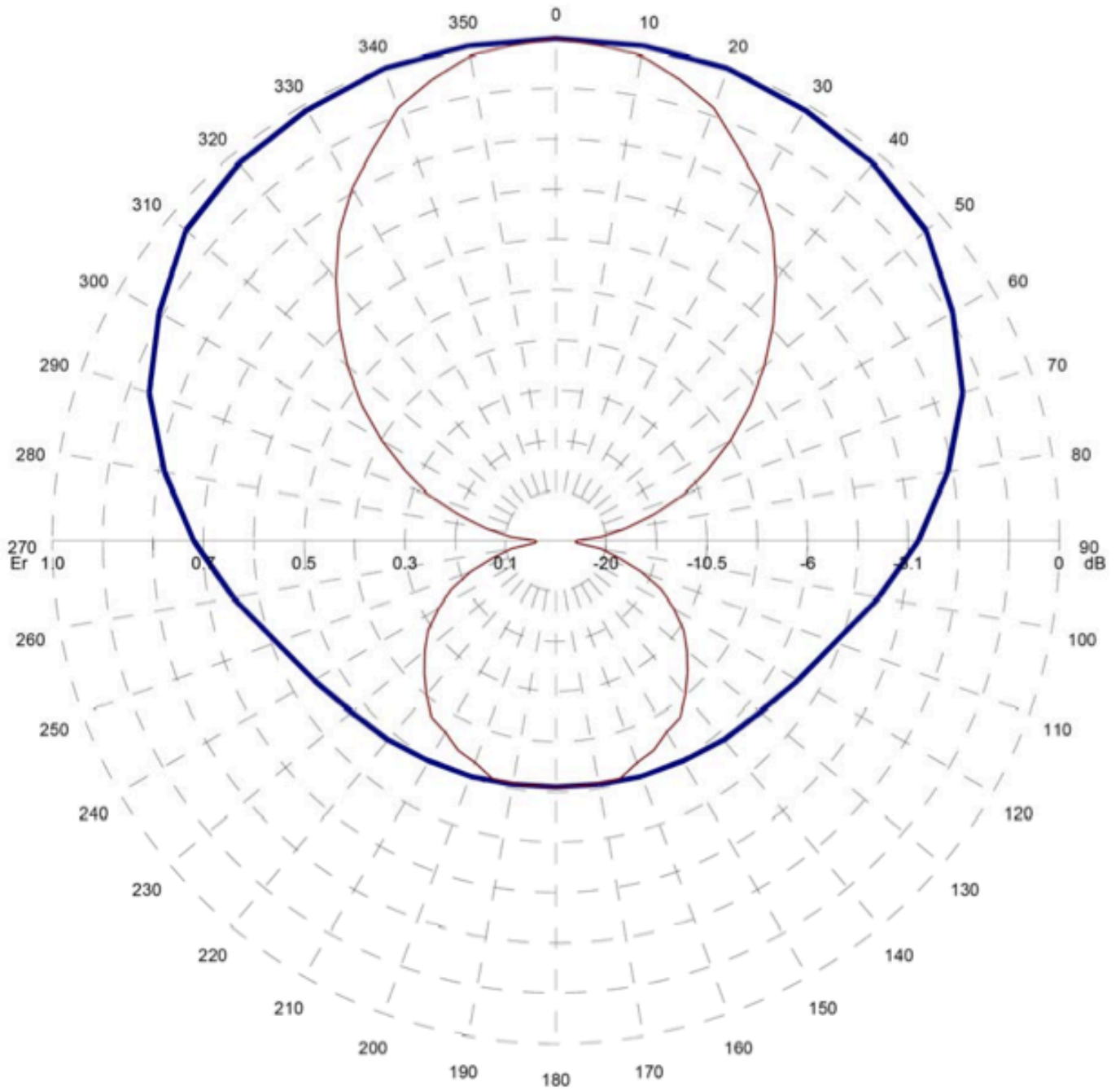
4 Screws metric 10 X 120 mm

4 Washers metric 10

4 Lock washers

Frequency: 98 MHz

H amplitude **V amplitude**



Gain (dB): 2.16

North E.C. (cm): 0

Return loss (dB): -24

East E.C. (cm): 0

R.C. phase (°): 0