

RIU-IP

Remote IP Interface



User Guide

JK Audio

Introduction

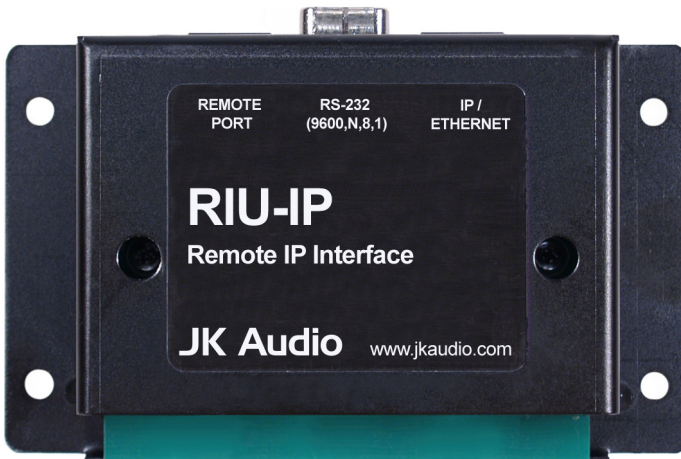
The RIU-IP is a remote control interface designed for use with the JK Audio innkeeper 1x/1rx, innkeeper 2 or innkeeper 4 digital hybrids. This unit contains a web server which allows the user to send and receive control data through their web browser. RIU-IP can be connected to the user's computer NIC card for direct control, to a switch or hub for network control, or to an Ethernet port with internet access for control from anywhere in the world.

Features

The *Remote Port* is a 10-conductor RJ-50 that connects to the Remote jack of your JK Audio innkeeper 1x/1rx, innkeeper 2 or innkeeper 4.

The *RS-232 Interface* is used only as a debug port at this time. Please contact our Technical Support department for more information.

The *IP/Ethernet* port is an 8-conductor RJ-45 that connects to your computer's NIC card, to your network switch or hub or to an Ethernet port with internet access. There are two bi-color LEDs on this port that indicate data transfer.



Connection

Connect the 10-conductor interface cable (supplied) from the RJ-50 “Remote Port” on the RIU-IP to the “Remote” jack on the back of your JK Audio innkeeper 1x/1rx or innkeeper 2/4. Power will be supplied to the device through this cable so no other power source is necessary. **Each time the unit is powered up it will need at least 30 seconds to complete its boot-up sequence before you can access the web browser.**

There are no jumpers, switches or other user configurable options on this device. The red LED on the circuit board only shows that the unit is receiving power through the Remote Port connection and will not indicate when the unit is sending or receiving commands.

Connect a standard Ethernet cable from the RJ-45 “IP/Ethernet” port on the RIU-IP to your network card. The IP address for this device will be assigned initially as 192.168.1.222. Every network is different. Please contact your network administrator for setup assistance if necessary. After the RIU-IP has been installed, your Network Administrator will be able to determine the current RIU-IP address if the initial static IP address does not appear valid.

You may now enter the initially assigned static IP address (or your current IP address if it has been changed) as you type the following into your web browser:

<http://www.192.168.1.222/index.html>

A pop-up box will appear asking for your User Name and Password. These are case sensitive! Enter the following:

User Name: admin

Password: RIUIP

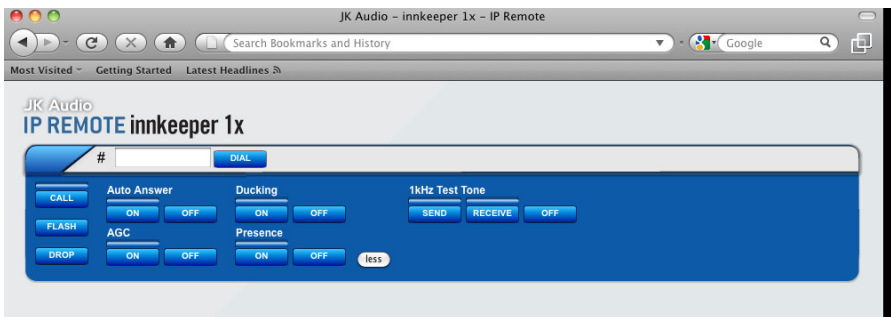
Please see the section on User Settings on Page 6 if you wish to change this password. To change the IP address see the section on TCP/IP Settings on Page 6.

Any time the RIU-IP is reactivated following a power cycle, you need to close all existing browser windows, open a new window and re-enter the URL. Clicking the “Refresh” button will load invalid data to the hybrid.

Applications - innkeeper 1x

This diagram illustrates the Web browser as shown for the innkeeper 1x. Follow the on-screen prompts for available features and functions.

This device will enable you to answer incoming calls or dial out to set up calls. All the features that are on the control panel on the innkeeper 1x will be available by remote access through the RIU-IP-1x. However, you will not be able to adjust volume levels remotely with the RIU-IP-1x.



Applications - innkeeper 2/4

The diagrams on the following page show the Web browser for the innkeeper 2 and the innkeeper 4. Follow the on-screen prompts for available features and functions.

This device will enable you to answer incoming calls or dial out to set up calls and it will add one new feature: you can place callers on hold remotely. Other key features that are on the control panel on the innkeeper 2 or innkeeper 4 will be available by remote access through the RIU-IP. You will not have remote access to the phone book or call history; you will need to manually enter each phone number to be dialed. Please note that the Conference feature is available only on the innkeeper 2.

Applications - innkeeper 2/4

The screenshot shows a web browser window titled "JK Audio - innkeeper 2 - IP Remote". The browser's address bar contains "Search Bookmarks and History" and the search engine is set to Google. The page content includes a header with "JK Audio" and "IP REMOTE innkeeper 2". Below the header, there are two main control panels, labeled "1" and "2". Each panel features a "DIAL" button next to a phone number input field. The first panel (1) includes a "1kHz Test Tone" section with "SEND", "RECEIVE", and "OFF" buttons. Both panels have a "Master Send" section with "ON" and "OFF" buttons, and an "Auto Answer" section with "OFF" and a dropdown menu. The "Caller" section has two "0 dB" dropdown menus, and the "Send" section has another "0 dB" dropdown menu and a "less" button. A "Conference" section with "ON" and "OFF" buttons is located between the two panels.

The screenshot shows a web browser window titled "JK Audio - innkeeper 4 - IP Remote". The browser's address bar contains "Search Bookmarks and History" and the search engine is set to Google. The page content includes a header with "JK Audio" and "IP REMOTE innkeeper 4". Below the header, there are four main control panels, labeled "1", "2", "3", and "4". Each panel features a "DIAL" button next to a phone number input field. The first panel (1) includes a "1kHz Test Tone" section with "SEND", "RECEIVE", and "OFF" buttons. All panels have a "Master Send" section with "ON" and "OFF" buttons, and an "Auto Answer" section with "OFF" and a dropdown menu. The "Caller" section has two "0 dB" dropdown menus, and the "Send" section has another "0 dB" dropdown menu and a "more" button.

Configuration Settings

This diagram illustrates the Configuration page for the RIU-IP that will enable your system administrator to change settings for use with your computer network system. Your Network Administrator may want to assign a different static (permanent) IP Address, or change IP addressing to DHCP. To enter the configuration page, enter the initially assigned IP address (or your current IP address if it has been changed) as you type the following into your web browser:

<http://www.192.168.1.222/config.html>

JK Audio - IP Remote Settings - Mozilla Firefox

File Edit View History Bookmarks Tools Help

http://192.168.1.112/config.html

Most Visited Getting Started Latest Headlines

JK Audio - IP Remote Settings

JK Audio IP REMOTE settings

TCP / IP Settings

SAVE LOAD CLEAR Help

Addressing Mode	<input type="text"/>	<u>Current IP Settings</u>	
IP Address	<input type="text"/>	Addressing Mode	DHCP
Network Mask	<input type="text"/>	IP Address	192.168.1.112
Gateway	<input type="text"/>	Network Mask	255.255.255.0
Primary DNS	<input type="text"/>	Gateway	192.168.1.1
Secondary DNS	<input type="text"/>	Primary DNS	192.168.1.254
		Secondary DNS	192.168.1.1

HTTP Settings

SAVE LOAD CLEAR Help

HTTP Port	<input type="text"/>	<u>Current HTTP Settings</u>	
HTTPS Port	<input type="text"/>	HTTP Port	80
		HTTPS Port	443

User Settings

SAVE CLEAR Help

Username	<input type="text"/>	<u>Current User</u>	
Password	<input type="text"/>	admin	Remove
Confirm Password	<input type="text"/>		

Configuration Settings

Display Current Settings

Access the configuration page by entering the URL address as shown on page 6. All current settings will be displayed on the right column on the page.

Change Current Settings

Enter the new information in the white space provided in the left column. A new IP address can be either static or dynamically allocated using DHCP and entered in the appropriate space on the configuration page.

Clicking on the Load button will populate each field with previously saved information for that section.

Clicking on the Clear button will clear each field in that section.

If you change the Username or Password, be sure to keep a record of the new information.

Save New Settings

Click on the Save button at the top of each section to save any changes made in that section.

Compatibility

The RIU-IP is compatible with the innkeeper 1x/1rx, innkeeper 2 and innkeeper 4 if they have the following minimum firmware versions found on those with the indicated serial numbers or later:

Innkeeper 1x:	V3.2.4.1	serial # IN1X02186
Innkeeper 1rx:	V3.2.4.1	serial # IN1RX02749
Innkeeper 2:	V2.1	serial # IN201728
Innkeeper 4:	V2.1	serial # IN401719

You can determine the current firmware version on an innkeeper 2 or innkeeper 4 by watching the display as the unit is powered on. Because all of the innkeeper 2 / 4 units shipped prior to release of the RIU-IP had older firmware, the RIU-IP will include new flash chips for each of these units as well as instructions for installation.

There are two methods to determine the current firmware version on an innkeeper 1x. You can connect the device to a serial port on your computer following the instructions in your User Guide and read the firmware number on your terminal emulator software. Or, you can remove the top cover of the innkeeper 1x and look for the flash chip with a white sticker on top and find the firmware version printed on the sticker. If your innkeeper 1x/1rx needs to be upgraded, please see the Downloads section on the innkeeper 1x/1rx page on our website at <http://www.jkaudio.com> or call our Technical Support department at 800-552-8346.

We strive to keep all of our products updated with the best functionality possible. Please check our website periodically to see if there are any upgrades available for your RIU-IP that can be downloaded and installed.

If you have any other questions on compatibility or upgrading your existing hybrid, please contact our Technical Support department at 800-552-8346.

FAQs

? The IP address you have assigned to the RIU-IP is already in use on my network system. How do I change the address to something else?

! Please see Pages 6-7 for more information on accessing the Configuration page.

? Why do I get invalid responses sometimes when I turn the RIU-IP on?

! The RIU-IP needs about 30 seconds to complete its boot-up sequence. The red LED only indicates that the unit is receiving power. There are no visual indicators to show when it is ready for use so please wait at least 30 seconds each time you energize this device before sending commands.

? Can I make a longer cable for the Remote Port?

! Yes, you can, but be aware that even though they have the same size connectors that will fit into each of the jacks, the Remote Port cable is not the same as an Ethernet cable. An Ethernet cable is an 8-conductor cable with RJ-45 connectors. The Remote Port uses a 10-conductor cable with RJ-50 connectors and the connector should be reversed on one end.

? Why does the RIU-IP ignore some of my commands?

! The transmission of data through the serial port interface can be a little slow sometimes. When commands overlap, some may be dropped. If a command is missed, simply repeat the command.

? How do I connect to my innkeeper from another location, such as when I am traveling in another state?

! Talk to your computer network administrator for remote access instructions for your site. Once you have access to the network, all the other commands will function as if you were in the same building.

Specifications

Control Connection:	RJ-45 Ethernet port
Digital Hybrid Connection:	RJ-50 (36" cable included)
RS-232 Serial Connection:	DB-9 (9600, 8, N, 1)
Size:	4.7" x 3.5" x 1.125"
Weight:	1 lb.
Web browser compatibility:	<i>Firefox</i> , versions 1.5 (or higher) <i>Internet Explorer</i> , version 6.0 (or higher) <i>Google Chrome</i>

(Note: If you experience problems with the web browser, please try a different one)

Contents of the package as shipped:

RIU-IP

(1) 36" 10-pin cable with RJ-50 connectors

(1) Flash chip for innkeeper 2

(1) Flash chip for innkeeper 4

User Guide

Warranty

The Model RIU-IP Remote Interface is covered by a 2 year warranty to be free from defective workmanship and materials. In the event that the RIU-IP Remote Interface needs repair, you must call us to get an authorization, and then carefully pack and ship it to us. You will pay for shipping to us and we will pay for return back to you, UPS ground. No free repairs will be made if the defect was caused by misuse, weather conditions, or other cause, except for defective workmanship or materials.

THERE ARE NO EXPRESSED OR IMPLIED WARRANTIES WHICH EXTEND BEYOND THE WARRANTY HERE MADE.

01/12